

Deltaweld® 350 Systems

MIG Welding
System



QUICK SPECS

Heavy Industrial Applications

General manufacturing
General fabrication
Structural steel fabrication
Transportation
Sheet metal fabrication
Light-gauge tube and sheet

Processes

MIG (GMAW)
Flux-cored (FCAW)
Accu-Pulse® (GMAW-P)*
Versa-Pulse™ (GMAW-P)**
High-deposition MIG (GMAW)**
RMD® (Regulated Metal Disposition)**

*With Intellex™ Pro and Intellex™ Elite feeders.

**With Intellex™ Elite feeders.

Auxiliary Power 115 V standard

Input Power

208/230/460 V or 575 V, 3-phase, 60 Hz
230 V, 1-phase, 60 Hz

Rated Output

350 A at 60% duty cycle

Output Range 20–400 A, 10–38 V

The standard in manufacturing for welders of all skill levels, with Intellex™ wire feeder options that deliver application-specific benefits.

Dedicated wire feeder options

- Intellex Basic feeder with arc control means welders can produce better welds with minimal parameter adjustments.
- Intellex Pro feeder adds EZ-Set, Accu-Pulse, memory buttons and steel and stainless weld programs.
- Intellex Elite feeder adds additional weld programs, intuitive display with on-demand graphics and more control.

Easy to use

EZ-Set simplifies parameter setup based on material thickness, removing complexity.



Pulse capable

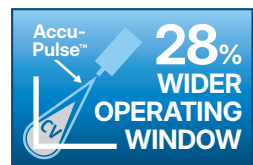
Accu-Pulse offers a more forgiving arc and compensates for variations in operator technique, providing a wider operating window.

Ready to weld

Reduce the time and hassle of setting up welding systems. Make your move to a weld-ready Deltaweld MIGRunner™.

Insight

Optional Welding Intelligence™ weld monitoring system. Get more done, produce higher-quality welds and control costs. See page 6 for more information.



Deltaweld 350 MIGRunner™ with single-wire Intellex™ Elite feeder shown with optional industrial water cooler (sold separately).



Power source is warranted for three years, parts and labor.
Original main power rectifier parts are warranted for five years.
Gun warranted for 90 days, parts and labor.



Miller Electric Mfg. LLC
An ITW Welding Company
1635 West Spencer Street
P.O. Box 1079
Appleton, WI 54912-1079 USA

Equipment Sales US and Canada
Phone: 866-931-9730
International Phone: 920-735-4554

MillerWelds.com
f X YouTube Instagram LinkedIn



Deltaweld® 350 Features

Wind Tunnel Technology™.

Internal air flow that protects electrical components and PC boards from dirt, dust, debris — greatly improving reliability.

Fan-On-Demand™ operates only

when needed reducing noise, power consumption, and the amount of airborne contaminants pulled through the machine.



Deltaweld 350 with Insight



Standard 115-volt auxiliary power provides 15 amps of circuit-breaker-protected power.



ArcConnect™ is a next generation communication that utilizes high speed signals to improve weld performance and allow point-of-use controls to be located at the feeder.

Backwards compatibility.

Models are available with both ArcConnect and the standard Miller® 14-pin for use with older Miller® wire feeders.



Deltaweld 350 with meters, 14-pin receptacle and Insight



Industrial cart is more robust with stowaway dual cylinder rack and lockable front casters with oversized rear wheels. Included in MIGRunner packages or sold separately.



Optional industrial water cooler plugs directly into the 115-volt receptacle on the back of the Deltaweld power source and slides into bottom of industrial cart. Has 2.5-gallon coolant capacity with easy front fill, external filter, and power and flow indicators.

Intelx™ Feeders Features



Balanced-pressure drive-roll design and tensioners feed wire in its truest and straightest form for consistent feedability, resulting in better welding performance.

Accu-Mate™ connection aligns the gun perfectly in the drive-roll carrier — preventing the gun from being pulled loose and providing consistent wire feeding.

Drive rolls and guides are common with other Miller® industrial feeders (use existing, not new parts).

Inlet guide and intermediate guide installation is toolless.

Rotatable drive assembly allows operator to rotate the drive, eliminating severe bends in the wire feed path. This extends gun-liner life and aids in feeding difficult wires.



Single-wire feeder swivel kit for convenience and function, reducing wear on gun and liner assembly. It includes integrated handle, MIG gun and cable holders, and moves with the MIG gun, allowing operator to see the front of the feeder and which parameters are selected.



Intelx Pro single-wire feeder

- Memory buttons for quick program recall
- Display and controls for volts/arc length, wire feed speed, and EZ-Set (if selected)
- Arc control to fine tune the welding arc
- LCD setup screen for easy selection of welding processes
- Jog and purge button
- Trigger hold, trigger select, preflow and postflow buttons



Intelx Elite single-wire feeder

- Soft keys to easily navigate menus
- Full-color LCD screen to simplify the setup and operation of a fully featured feeder
- Arc control to fine tune welding arc
- Memory buttons for quick program recall
- Trigger connections for standard MIG gun and XR-Aluma-Pro™ Plus and XR™-Pistol Plus push-pull guns



Dual-wire models allow two different wire types to be available on one feeder, avoiding downtime from changing spools and drive rolls.

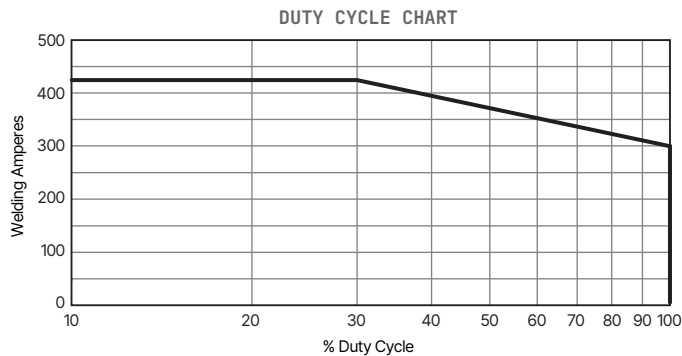
Deltaweld® 350 Processes and Performance Data

| BEST FOR | STANDARD SPRAY | HD MIG** | ACCU-PULSE* | VERSA-PULSE** | SHORT CIRCUIT | RMD** |
|------------------------|----------------|----------|-------------|---------------|---------------|-------|
| Deposition | A | A | A | B | D | D |
| Gap filling | D | D | B | B | A | A |
| Low heat input | D | C | B | A | A | A |
| Out-of-position welds | | | A | B | B | B |
| Low spatter | A | A | A | B | C | B |
| Thick metals | A | A | A | C | D | D |
| Thin metals | | | B | A | A | A |
| Increased travel speed | A | A | A | A | B | C |



Ratings A, B, C, and D are relative values. An "A" rating indicates a best fit between your performance needs and process. A "blank" rating indicates that the process is not recommended for that application.

*With Intellix™ Pro and Intellix™ Elite feeders. **With Intellix™ Elite feeders.



MIG

- Lower spatter than traditional MIG welders
- Better arc performance with silicon bronze and coated materials

Accu-Pulse®*

- The most popular process for majority of industrial welding applications
- Most adaptive arc on 16 gauge (1.6 mm) and thicker
- Designed for all weld positions

Versa-Pulse™**

- Fast, low-heat, low-spatter process — for materials 1/4 inch (6.35 mm) and thinner
- Great for gap filling
- Shortest arc length/lowest pulse voltage for lower heat and lower spatter at higher speeds

High-deposition MIG (HD MIG)**

- Higher deposition rates than standard spray transfer on thicker materials
- Designed for welding applications in which spray transfer is preferred

RMD®**

- Lowest heat process, best for gap handling
- Limited travel speed

Deltaweld® 350 Specifications (Subject to change without notice.)



| MODE | INPUT TYPE | AMP/VOLT RANGES | RATED OUTPUT | AMPS INPUT AT RATED LOAD OUTPUT, 60 HZ | | | | | | DIMENSIONS | NET WEIGHT |
|------------|------------|-----------------|-------------------------------------|--|-------|-------|-------|--------------|--------------|--|----------------------|
| | | | | 208 V | 230 V | 460 V | 575 V | KVA | KW | | |
| MIG (GMAW) | 3-phase | 10–38 V | 300 A at 29 VDC, 100% duty cycle | 29.3 | 26.5 | 14.6 | 12.4 | 11.6 (12.4*) | 10.0 (9.7*) | H: 22.36 in. (568 mm) (includes lift eye) W: 15.35 in. (390 mm) D: 29.15 in. (740 mm) | 115 lb. (52.2 kg) |
| | | | 350 A at 31.5 VDC, 60% duty cycle | 36.7 | 33.4 | 18.1 | 15.1 | 14.5 (15.1*) | 12.5 (12.4*) | | |
| | | | 425 A at 35.25 VDC, 30% duty cycle | 50.0 | 45.1 | 23.1 | 19.1 | 18.5 (19.1*) | 16.9 (16.6*) | | |
| | 1-phase | 10–38 V | 225 A at 25.25 VDC, 100% duty cycle | — | 38.6 | — | — | 8.86 | 6.79 | | |
| | | | 250 A at 26.5 VDC, 60% duty cycle | — | 45.5 | — | — | 10.45 | 7.96 | | |

*KVA and KW for 575-volt model. Certified by Canadian Standards Association to both the Canadian and U.S. Standards.

Intellex™ Feeders Comparison



Processes

- MIG
- EZ-Set MIG (Intellex Pro and Intellex Elite)
- EZ-Set Accu-Pulse® (Intellex Pro and Intellex Elite)
- EZ-Set Versa-Pulse™ (Intellex Elite)
- EZ-Set High-deposition MIG (Intellex Elite)
- EZ-Set RMD® (Intellex Elite)



Intellex Pro and Intellex Elite Feeder Programs

- Different wire sizes
- Different gas types
- Flux-cored
- Metal-cored
- Steel
- Stainless steel
- Aluminum

Additional Intellex Elite Feeder Programs

- Nickel
- Copper nickel
- Silicon bronze
- Titanium

| FEATURE | INTELLEX BASIC FEEDER | INTELLEX PRO FEEDER | INTELLEX ELITE FEEDER |
|--|-----------------------|---------------------|-----------------------|
| Digital meters | ■ | ■ | Full color LCD |
| Remote voltage | ■ | ■ | ■ |
| Wire feed speed | ■ | ■ | ■ |
| Arc control | ■ | ■ | ■ |
| Trigger hold | ■ | ■ | ■ |
| Wire jog and purge | ■ | ■ | ■ |
| Wire feed speed feedback | ■ | ■ | ■ |
| Four drive rolls | ■ | ■ | ■ |
| Dual-wire models | ■ | ■ | ■ |
| Rotatable drive | ■ | ■ | ■ |
| Up to 60 lb. spool | ■ | ■ | ■ |
| MIG process | ■ | ■ | ■ |
| Insight Centerpoint™ Basic compatible* | ■ | ■ | ■ |
| EZ-Set MIG and Accu-Pulse® | | ■ | ■ |
| Trigger select | | ■ | ■ |
| Preflow and postflow | | ■ | ■ |
| Memory slots | | 2 | 8 |
| Out-of-box programs (steel/stainless/aluminum) | | ■ | ■ |
| Out-of-box programs (nickel/copper nickel/silicon bronze/titanium) | | | ■ |
| EZ-Set Versa-Pulse™, high-deposition MIG and RMD® | | | ■ |
| XR™ Plus push-pull gun compatible | | | ■ |
| Profile Pulse™ | | | ■ |
| Weld sequence control | | | ■ |
| Trigger dual schedule | | | ■ |
| Dual schedule switch support | | | ■ |
| Parameter limits | | | ■ |
| Memory lockouts | | | ■ |
| System lock | | | ■ |
| Wire retract | | | ■ |
| Auto thread and auto purge | | | ■ |
| Cloning and custom weld library | | | ■ |
| Insight Centerpoint™ Premium compatible* | | | ■ |

*Insight module required.

Intellex™ Feeder Specifications (Subject to change without notice.)



| INPUT POWER | WELDING POWER SOURCE | INPUT WELDING CIRCUIT RATING | WIRE FEED SPEED | WIRE DIAMETER CAPACITY | MAXIMUM SPOOL SIZE CAPACITY | DIMENSIONS (H x W x D) | NET WEIGHT |
|-------------|---------------------------|----------------------------------|------------------------------|--|-----------------------------------|---|--|
| 50 VDC | Deltaweld 350, 500 or 600 | 600 A at 113 VDC, 60% duty cycle | 50–780 ipm (1.3–19.8 m/min.) | .023–5/64 in. (0.6–2.0 mm) Elite model only: Aluminum: .035–1/16 in. (0.9–1.6 mm) | 18 in. (457 mm) 60 lb. (27 kg) | Single-wire: 16.25 x 12.38 x 27.88 in. (413 x 314 x 708 mm) Dual-wire: 14 x 18 x 34.5 in. (356 x 457 x 876 mm) | Single-wire: 44.8 lb. (20.3 kg) Dual-wire: 77 lb. (34.9 kg) |

Certified by Canadian Standards Association to both the Canadian and U.S. Standards.



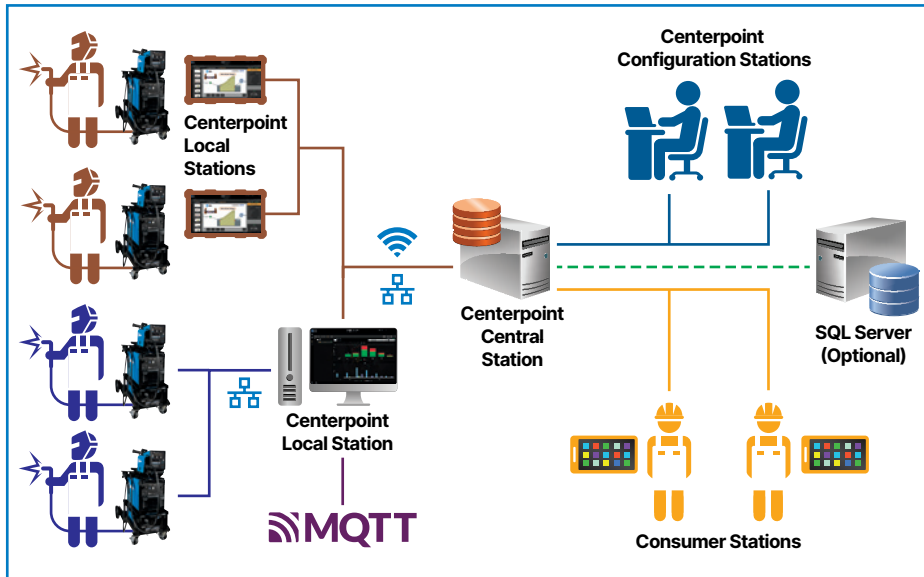
Insight Welding Intelligence™

With an Insight weld monitoring system you can get more done, produce higher-quality welds and control costs.

Insight Centerpoint™ (Purchased license(s) of Centerpoint required.)

On-premises application providing productivity/utilization metrics, capture of welding parameters, operator weld sequence governance, and integration with enterprise IIoT solutions. Scalable to end user needs.

- **Measure welding productivity.** See each welder's arc-on time to set baselines and plan improvements. Capture activities to understand downtime reasons.
- **Govern operator tasks.** Through an easy-to-use operator interface direct welding and non-welding tasks to follow standard work practices, reduce out of sequence welds, and prevent missing welds.
- **Reduce training costs.** Utilize Centerpoint as the "Digital Mentor" to train new welders on proper production steps freeing up senior personnel for more productive activities.
- **Configure weld process remotely.** Full fleet management allows configuration of Deltaweld settings from Centerpoint.



Requirements

Deltaweld® 350 and 500 require Insight factory option (page 12) or field install kit (289303)

Deltaweld 600 includes required Insight board option

Modes of operation

- **Basic mode** included at no cost
- **Premium mode** requires a purchased capability key for each Deltaweld

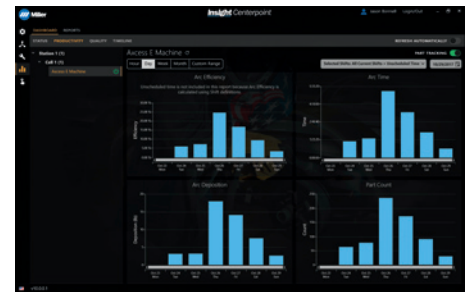
301485 Centerpoint v10 Single License

301490 Centerpoint Premium Capability Activation



▲ Premium mode

▼ Basic mode



Learn more at MillerWelds.com/insight

Deltaweld® 350 MIGRunner™ Packages

Deltaweld 350 MIGRunner with Intellex™ Basic Feeder

951000138 With single-wire Intellex Basic

951000139 With dual-wire Intellex Basic

Includes

- Deltaweld power source (907747) with factory-installed industrial cart with stowaway dual cylinder rack
- Intellex Basic single- **OR** dual-wire feeder
- 15 ft. (4.6 m) Bernard® BTB Gun 400 A (two with dual-wire feeder) with AccuLock™ consumables
- Factory-installed swivel kit with integrated handle, cable and gun holders, and chains for gas cylinders
- Cart accessory kit for single- or dual-wire feeders consisting of flowmeter regulator with 5 ft. (1.5 m) gas hose (two with dual-wire feeder), 10 ft. (3 m) 4/0 feeder weld cable with lugs, 15 ft. (4.6 m) work cable with 600-amp C-clamp, and 9 ft. (2.7 m) ArcConnect control/motor cable
- .035/.045 in. V-groove drive rolls
- Quick-setup guide



951000138
package
shown

Deltaweld 350 MIGRunner with Intellex™ Pro Feeder

951000140 With single-wire Intellex Pro

951000141* With Insight and single-wire Intellex Pro

951000197 With dual-wire Intellex Pro

Includes

- Deltaweld power source (907747, or 907747002 on Insight package) with factory-installed industrial cart with stowaway dual cylinder rack
- Intellex Basic single- **OR** dual-wire feeder
- 15 ft. (4.6 m) Bernard® BTB Gun 400 A (two with dual-wire feeder) with AccuLock™ consumables
- Factory-installed swivel kit with integrated handle, cable and gun holders, and chains for gas cylinders
- Cart accessory kit for single- or dual-wire feeders consisting of flowmeter regulator with 5 ft. (1.5 m) gas hose (two with dual-wire feeder), 10 ft. (3 m) 4/0 feeder weld cable with lugs, 15 ft. (4.6 m) work cable with 600-amp C-clamp, and 9 ft. (2.7 m) ArcConnect control/motor cable
- .035/.045 in. V-groove drive rolls
- Quick-setup guide

**Includes Insight Centerpoint™ Basic mode. Insight Centerpoint Basic mode requires Centerpoint license(s).*



951000141
package
shown

Deltaweld 350 MIGRunner with Intellex™ Elite Feeder

951000142 With single-wire Intellex Elite

951000143** With Insight and single-wire Intellex Elite

951000144 With dual-wire Intellex Elite

951000145 With single-wire Intellex Elite and push-pull gun

951000146 With dual-wire Intellex Elite and push-pull gun

Includes

- Deltaweld power source (907747, or 907747002 on Insight package) with factory-installed industrial cart with stowaway dual cylinder rack
- Intellex Basic single- **OR** dual-wire feeder
- 15 ft. (4.6 m) Bernard® BTB Gun 400 A (two with dual-wire feeder) with AccuLock™ consumables
- Factory-installed swivel kit with integrated handle, cable and gun holders, and chains for gas cylinders
- Cart accessory kit for single- or dual-wire feeders consisting of flowmeter regulator with 5 ft. (1.5 m) gas hose (two with dual-wire feeder), 10 ft. (3 m) 4/0 feeder weld cable with lugs, 15 ft. (4.6 m) work cable with 600-amp C-clamp, and 9 ft. (2.7 m) ArcConnect control/motor cable
- **Push-only gun packages:** .035/.045 in. V-groove drive rolls
- **Push-pull gun packages:** .035/.047 U-groove drive rolls (and .035/.045 in. V-groove drive rolls with dual-wire feeder)
- Quick-setup guide

***Includes Insight Centerpoint™ Basic mode. Insight Centerpoint Basic mode requires Centerpoint license(s). Optional Insight Centerpoint Premium (301490) can be added for use with Intellex Elite feeder/ROI.*



951000143
package
shown

Genuine Miller® Accessories

Industrial Cart and Feeder Swivel Kit

Feeder Swivel Kit (301838) is required to add handle, MIG gun holder, cable management, and gas cylinder support.



Industrial Cart 301758
Robust cart features small footprint, stowaway dual-cylinder rack and lockable front casters with oversized rear wheels. Industrial cooler (sold separately) integrates into bottom portion of cart.



Feeder Swivel Kit 301838
For single- and dual-wire feeders. Allows feeder to mount to the top of Deltaweld. Includes integrated handle, MIG gun and cable holders.

Note: ONLY the single-wire feeder can swivel.



Stationary Handle Kit 301529
Allows easy movement and portability of the power source.

Note: Stationary handle kit is not compatible with feeder swivel kit above.



Hanging Bail 058435
Used for suspending feeder over work area.



Cart Accessory Kit 301528
Single-wire feeder kit for use with industrial cart 301758. See note below for dual-wire feeder kit. Consists of flowmeter regulator with 5-foot (1.5 m) gas hose, 10-foot (3 m) 4/0 feeder weld cable with lugs, 15-foot (4.6 m) work cable with 600-amp C-clamp, and 9-foot (2.7 m) ArcConnect control/motor cable. Dual kit comes with an additional flowmeter regulator and gas hose.

Note: For dual-wire feeder kit both 301528 and 301579 are required.



Spool Covers 295231
For single-wire feeders and left side of dual-wire feeders
090389
For right side of dual-wire feeders

For 12-inch (305 mm) spool.

Note: Spool covers cannot be installed if the wire drive assembly is in a rotated position.



Spool Adapter 047141
For use with 14-pound (6.4 kg) spool of Lincoln self-shielding wire.



Wire Reel Assembly 108008
For 60-pound (27 kg) coil of wire.



Reel Covers 195412 For single-wire feeders and left side of dual-wire feeders
091668 For right side of dual-wire feeders
For 60-pound (27 kg) coil. Helps to protect the welding wire from dust and other contaminants.

Note: Reel covers cannot be installed if the wire drive assembly is in a rotated position.



ArcConnect Control/Motor Cables

280471009 9 ft. (2.7 m)
280471015 15 ft. (4.6 m)
280471025 25 ft. (7.6 m)
280471050 50 ft. (15.2 m)
280471075 75 ft. (22.9 m)
280471100 100 ft. (30.5 m)
280471150 150 ft. (45.7 m)

Connects power source directly to feeder or remote operator interface.

Note: Cables cannot be joined together to create longer lengths and extension cables are not available.



Work Sense Leads (voltage sense)

300461 25 ft. (7.6 m)
300462 50 ft. (15.2 m)

When connected from the back of the wire feeder to the workpiece, the work sense lead provides accurate voltage feedback on the wire feeder display, and compensates for any voltage drop from the weld cables.



AccuLock™ Nozzle N-A3412C

ONLY for use with Intellix™ Elite feeders. Required for high-deposition MIG (HD MIG) process when using Bernard® BTB gun with AccuLock consumables.

Coolant Systems



Industrial Water Cooler (115 V) 301759
2.5-gallon cooler for use with water-cooled torches rated up to 600 amps. Plugs directly into the 115-volt receptacle on the back of the Deltaweld power source and slides into bottom of new cart. Features easy front fill, external filter, and power and flow indicators.

Coolant Fitting 081543
5/8-18 UNF-2B LH thread (sold separately).

Coolant 043809
Sold in cases of four one-gallon recyclable plastic bottles. Miller coolants contain a base of ethylene glycol and deionized water to protect against freezing to -37 degrees Fahrenheit (-38°C) or boiling to 227 degrees Fahrenheit (108°C). Also contains a compound that resists algae growth.

XR™ Plus Push-Pull Guns (ONLY for use with Intelx™ Elite feeder/ROI/Swingarc™.)



XR-Aluma-Pro™ Plus Guns

Air-Cooled
301575 15 ft. (4.6 m)
301574 25 ft. (7.6 m)
301739 35 ft. (10.7 m)

Water-Cooled
301576 15 ft. (4.6 m)
301577 25 ft. (7.6 m)
301740 35 ft. (10.7 m)

XR™-Pistol Plus Guns

Air-Cooled
300753 15 ft. (4.6 m)
300754 25 ft. (7.6 m)

Water-Cooled
300757 25 ft. (7.6 m)

Available in air- or water-cooled versions in multiple lengths for extended reach with trouble-free, reliable feeding.

Aluminum-series-specific tension setting ensures smooth wire feeding performance with 4000 or 5000 series aluminum wires.

Replaceable feed cable liner is designed to provide consistent arc performance. It also reduces parts cost and service time by allowing a simple means of removing and replacing liner and not the complete feed cable.

Isolated common knurled drive roll helps reduce wear, reducing down time and cost.

Easy-to-rotate self-seating head tube allows for better access into tight spots, providing excellent current transfer.

Serviceability. These guns feature a full-length hook-and-loop seamed leather jacket with integrated strain reliefs for easy cable maintenance and protection. Additionally, the Aluma-Pro Plus guns feature quick connections between the control cable and electrical components (trigger, motor, potentiometer).

Specifications (Subject to change without notice.)

| MODEL | WELDING CURRENT RATING | WIRE FEED SPEED | WIRE TYPE AND DIAMETER CAPACITY | DIMENSIONS | NET WEIGHT (GUN ONLY) |
|----------------------------------|---|---|---|---|-----------------------|
| XR-Aluma-Pro Plus (Air-cooled) | 300 A at 100% duty cycle | 70–900 ipm (1.8–23 m/min.) dependent on feeder used | .030–1/16 in. (0.8–1.6 mm) aluminum wire | H: 5 in. (127 mm) W: 2.5 in. (64 mm) D: 17 in. (432 mm) | 2.5 lb. (1.1 kg) |
| XR-Aluma-Pro Plus (Water-cooled) | 400 A at 100% duty cycle | 70–900 ipm (1.8–23 m/min.) | Requires gun wire kit 230708 to run 1/16 in. (1.6 mm) wire | | 2.9 lb. (1.3 kg) |
| XR-Pistol Plus (Air-cooled) | 200 A at 100% duty cycle 250 A at 60% duty cycle | 70–900 ipm (1.8–23 m/min.) | .030–1/16 in. (0.8–1.6 mm) aluminum wire | H: 7.375 in. (187 mm) W: 1.875 in. (48 mm) D: 10.625 in. (270 mm) | 2.2 lb. (1 kg) |
| XR-Pistol Plus (Water-cooled) | 400 A at 100% duty cycle | | Requires gun wire kit 230708 to run 1/16 in. (1.6 mm) wire | | 2.4 lb. (1.1 kg) |

Note: XR Plus guns are only compatible with MPa Plus feeder, Intelx Elite feeder, Intelx Elite ROI/remot wire drive or Intelx Elite Swingarc boom-mounted feeder.

Certified by Canadian Standards Association to both the Canadian and U.S. Standards. Conforms to European standards.

Drive Roll Kits and Guides

Select drive roll kits from chart below according to type and wire size being used.

Drive roll kits include four drive rolls, necessary guides and feature an anti-wear sleeve for inlet guide.

| WIRE SIZE | V-GROOVE FOR HARD WIRE | U-GROOVE FOR SOFT WIRE OR SOFT-SHELLED CORED WIRES | V-KNURLED FOR HARD-SHELLED CORED WIRES | U-COGGED FOR EXTREMELY SOFT WIRE OR SOFT-SHELLED CORED WIRES, (I.E., HARD FACING TYPES) |
|------------------------|------------------------|--|--|---|
| .023/.025 in. (0.6 mm) | 087132 | — | — | — |
| .030 in. (0.8 mm) | 046780 | — | — | — |
| .035 in. (0.9 mm) | 046781 | 044750 | 046792 | — |
| .040 in. (1.0 mm) | 191917 | — | — | — |
| .045 in. (1.1/1.2 mm) | 046782 | 046785 | 046793 | 083319 |
| .052 in. (1.3/1.4 mm) | 046783 | 046786 | 046794 | — |
| 1/16 in. (1.6 mm) | 046784 | 046787 | 046795 | 046800 |
| .068/.072 in. (1.8 mm) | — | — | — | — |
| 5/64 in. (2.0 mm) | — | 046788 | 046796 | 046801 |

*Included with Intelx feeder packages. Drive roll is dual-size reversible with one .035-inch and one .045-inch groove.

**Included with push-pull gun packages. Drive roll is dual-size reversible with one .035-inch and one .045-inch groove which also accommodates .047-inch (3/64-inch) wire.

Wire Guides

| WIRE SIZE | INLET GUIDE | INTERMEDIATE GUIDE |
|----------------------------|---------------|--------------------|
| .023–.040 in. (0.6–1.0 mm) | 221030 | 056206 |
| .045–.052 in. (1.2–1.3 mm) | 221030 | 056207 |
| 1/16–5/64 in. (1.6–2.0 mm) | 221030 | 056209 |
| 5/64–1/8 in. (2.0–3.2 mm) | 229919 | 056211 |

Note: When ordering hard wire kits, retain factory-supplied inlet guide.

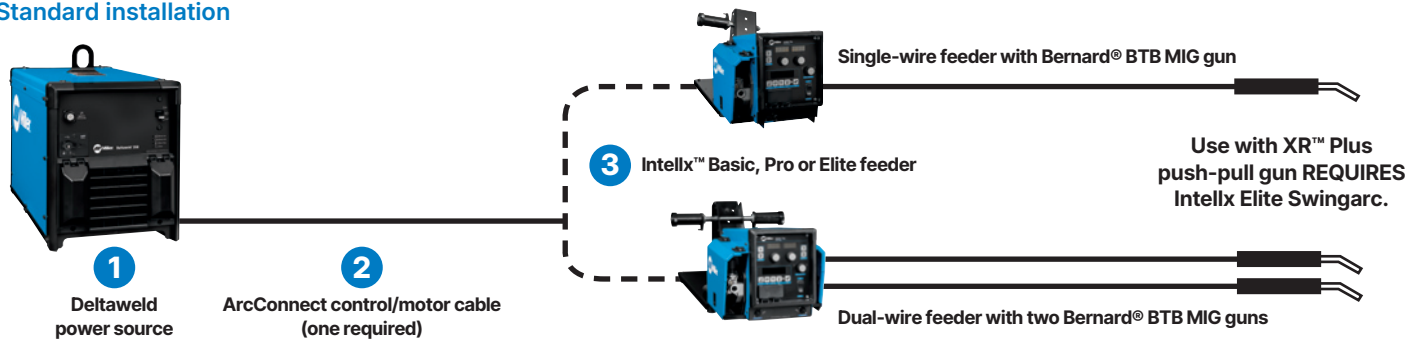
Nylon Guides for Feeding Aluminum

| WIRE SIZE | INLET GUIDE AND INTERMEDIATE GUIDE KITS |
|-------------------|---|
| .035 in. (0.9 mm) | 293928 |
| .047 in. (1.2 mm) | 293929 |
| 1/16 in. (1.6 mm) | 293930 |

Note: U-groove drive rolls are recommended when feeding aluminum wire.

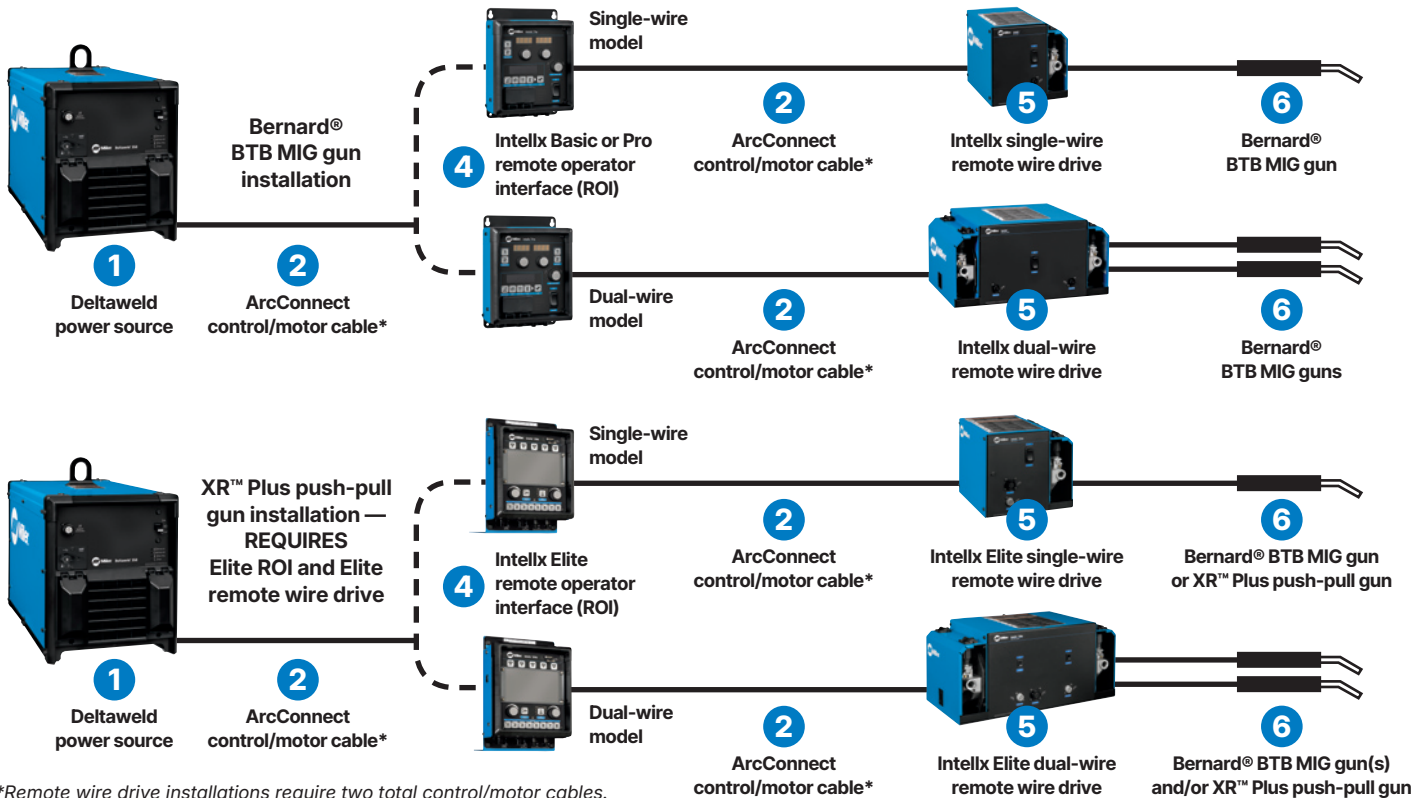
Typical Deltaweld® 350 System Installations

Standard installation



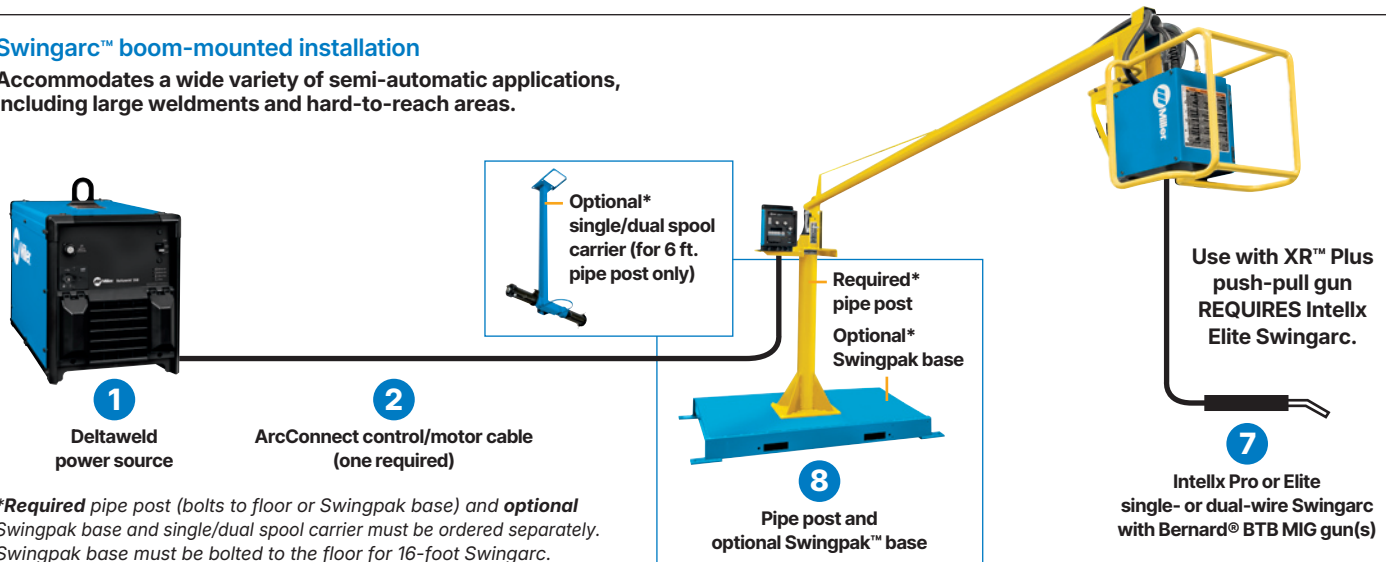
Remote wire drive installations

Ideal for fixed automation and boom applications where the wire drive motor is installed/controlled remotely.



Swingarc™ boom-mounted installation

Accommodates a wide variety of semi-automatic applications, including large weldments and hard-to-reach areas.



*Required pipe post (bolts to floor or Swingpak base) and optional Swingpak base and single/dual spool carrier must be ordered separately. Swingpak base must be bolted to the floor for 16-foot Swingarc. See page 11.

Ordering Information (Most popular models ◀)

Configure a Custom Deltaweld System (See corresponding item numbers in Typical Deltaweld Systems Installations on page 10.)
See page 12 for packages.

| EQUIPMENT AND OPTIONS | STOCK NO. | DESCRIPTION | QTY. | PRICE |
|---|---|--|--|-------|
| 1 Power Source | | | | |
| Deltaweld™ 350 208/230/460 V | 907747 ◀ 907747001 907747002* 907747003* | With ArcConnect With ArcConnect, meters and 14-pin receptacle With ArcConnect and Insight With ArcConnect, 14-pin receptacle and Insight | | |
| Deltaweld™ 350 575 V | 907879 907879001 907879003* | With ArcConnect With ArcConnect and 14-pin receptacle With ArcConnect, 14-pin receptacle and Insight | | |
| 2 Cables and Leads | | | | |
| ArcConnect Control/Motor Cables | | See page 8 for available lengths | | |
| Work Sense Leads (volt sense) | | See page 8 for available lengths | | |
| 3 Feeder, ROI and Swingarc | | | | |
| Intellex™ Basic Bench-Style Wire Feeders | 951783001 951815001 | Single-wire feeder with Bernard BTB Gun 400 A Dual-wire feeder with two Bernard BTB Gun 400 A | With AccuLock™ consumables and .035/.045 in. V-groove drive rolls | |
| Intellex™ Pro Bench-Style Wire Feeders | 951784001 ◀ 951816001 | Single-wire feeder with Bernard BTB Gun 400 A Dual-wire feeder with two Bernard BTB Gun 400 A | | |
| Intellex Elite Bench-Style Wire Feeders | 951941001 951942001 | Single-wire feeder with Bernard BTB Gun 400 A Dual-wire feeder with two Bernard BTB Gun 400 A | | |
| | | | | |
| Intellex Basic Remote Operator Interface (ROI) | 301548 301551 | Control box for single-wire drive assembly Control box for dual-wire drive assembly | | |
| Intellex Pro Remote Operator Interface (ROI) | 301552 301553 | Control box for single-wire drive assembly Control box for dual-wire drive assembly | | |
| Intellex Elite Remote Operator Interface (ROI) | 301606 301607 | Control box for single-wire drive assembly. ONLY for use with Intellex Elite remote wire drive Control box for dual-wire drive assembly. ONLY for use with Intellex Elite remote wire drive | | |
| Intellex Remote Wire Drives | 301554 301555 | Single-wire drive assembly Dual-wire drive assembly | | |
| Intellex Elite Remote Wire Drives | 301722 301723 | Single-wire drive assembly. ONLY for use with Intellex Elite ROI Dual-wire drive assembly. ONLY for use with Intellex Elite ROI | | |
| 6 Bernard® BTB Gun 400 A | | | | |
| XR™ Plus Push-Pull Guns | Q4015AE9EMC | 400 A, 15 ft. (4.6 m) with AccuLock™ consumables | | |
| | | ONLY for use with Intellex Elite wire feeder, Elite ROI/remote wire drive or Elite Swingarc boom-mounted wire feeder. See page 9 | | |
| 7 Intellex Pro Swingarc™ Boom-Mounted Wire Feeders | | | | |
| | 951804001 951806001 951932001 | 12 ft. single-wire model with Bernard BTB Gun 400 A 16 ft. single-wire model with Bernard BTB Gun 400 A 12 ft. dual-wire model with two Bernard BTB Gun 400 A | With AccuLock™ consumables and .035/.045 in. V-groove drive rolls | |
| Intellex Elite Swingarc™ Boom-Mounted Wire Feeders | 951000091 951000093 951000092 | 12 ft. single-wire model with Bernard BTB Gun 400 A 16 ft. single-wire model with Bernard BTB Gun 400 A 12 ft. dual-wire model with two Bernard BTB Gun 400 A | | |
| | | | | |
| 8 Pipe Post | | | | |
| | 149838 149839 | 4 ft. pipe post. Required for mounting Swingarc booms 6 ft. pipe post. Required for mounting Swingarc booms | | |
| Swingpak™ Base | 183997 | Optional mounting platform for pipe post | | |
| Single/Dual Spool Carrier | 300352 | Optional spool carrier for 6 ft. pipe post | | |
| Accessories | | | | |
| Industrial Cart | 301758 | For Deltaweld 350/500/600 | | |
| Cart Accessory Kit | | For single- or dual-wire bench feeders. See page 8 | | |
| Stationary Handle Kit | 301529 | | | |
| Feeder Accessories | | See page 8 | | |
| Coolant Systems | | | | |
| Industrial Water Cooler | 301759 | See page 8 | | |
| Coolant Fitting | 081543 | 5/8-18 UNF-2B LH thread | | |
| Coolant | 043809 | See page 8 | | |

DATE:

TOTAL QUOTED PRICE:

*Includes Insight Centerpoint™ Basic mode. Insight Centerpoint Basic mode requires Centerpoint license(s).
Optional Insight Centerpoint Premium (301490) can be added for use with Intellex Elite feeder/ROI.

Ordering Information (Most popular models ◀)

| DELTAWELD® 350 PACKAGES | STOCK NO. | DESCRIPTION | QTY. | PRICE |
|--|--------------------|--|------|-------|
| Deltaweld 350 MIGRunner™ with Single-Wire Intelx™ Basic | 951000138 | Includes Deltaweld 350 power source (907747), single- or dual-wire Intelx Basic feeder with Bernard® BTB Gun 400 A (two with dual-wire feeder) and AccuLock™ consumables. See page 7 for complete package description | | |
| Deltaweld 350 MIGRunner with Dual-Wire Intelx Basic | 951000139 | | | |
| Deltaweld 350 MIGRunner with Single-Wire Intelx Pro | 951000140 ◀ | Includes Deltaweld 350 power source (907747, or 907747002 on Insight package), single- or dual-wire Intelx Pro feeder with Bernard® BTB Gun 400 A (two with dual-wire feeder) and AccuLock™ consumables. See page 7 for complete package description | | |
| Deltaweld 350 MIGRunner with Insight and Single-Wire Intelx Pro | 951000141* | | | |
| Deltaweld 350 MIGRunner with Dual-Wire Intelx Pro | 951000197 | | | |
| Deltaweld 350 MIGRunner with Single-Wire Intelx Elite | 951000142 | Includes Deltaweld 350 power source (907747, or 907747002 on Insight package), single- or dual-wire Intelx Elite feeder with Bernard® BTB Gun 400 A (two with dual-wire feeder) and AccuLock™ consumables. See page 7 for complete package description | | |
| Deltaweld 350 MIGRunner with Insight and Single-Wire Intelx Elite | 951000143** | | | |
| Deltaweld 350 MIGRunner with Dual-Wire Intelx Elite | 951000144 | | | |
| Deltaweld 350 with Insight, Running Gear, and Cart Accessory Kit | 907896** | Same as above, but without wire feeder and MIG gun (see options on page 11). If ordering a dual-wire feeder, also order accessory kit (301579) | | |
| Deltaweld 350 MIGRunner with Single-Wire Intelx Elite and Push-Pull Gun | 951000145 | Includes Deltaweld 350 power source (907747), single- or dual-wire Intelx Elite feeder with XR-Aluma-Pro™ Plus push-pull gun (and Bernard® BTB Gun 400 A with AccuLock™ consumables on dual-wire feeder). See page 7 for complete package description | | |
| Deltaweld 350 MIGRunner with Dual-Wire Intelx Elite and Push-Pull Gun | 951000146 | | | |

DATE :

TOTAL QUOTED PRICE :

*Includes Insight Centerpoint™ Basic mode. Insight Centerpoint Basic mode requires Centerpoint license(s).

**Includes Insight Centerpoint™ Basic mode. Insight Centerpoint Basic mode requires Centerpoint license(s).
Optional Insight Centerpoint Premium (301490) can be added for use with Intelx Elite feeder/ROI.

Distributed by:

